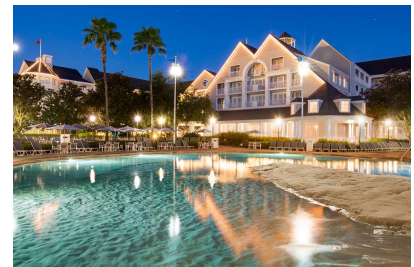




DISNEY'S YACHT CLUB RESORT



Delight in the formal grace of a grand New England-style yacht club at this lakeside hotel. Relax in the inviting elegance of a plush lobby replete with nautical touches, explore the whimsical Stormalong Bay and rent a variety of watercraft from Bayside Marina. Sharing many amenities with its pastel-toned sister, **Disney's Beach Club Resort**, **Disney's Yacht Club Resort** is walking distance to **EPCOT®** and a convenient boat ride to **Disney's Hollywood Studios®**.



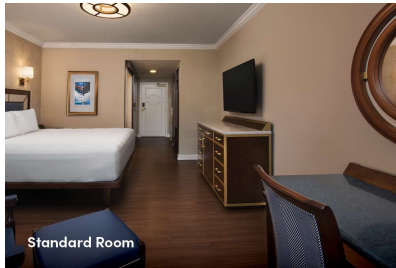
ROOMS



Standard Room



Standard Room



Standard Room



Standard Room



Standard Rooms

Accommodate up to five Guests, plus one child under age 3 in a crib, 2 queen-size beds & 1 twin-size sleeper chair, or 1 king-size bed & 1 day bed, or 1 king-size bed, or 1 queen-size bed & 1 twin-size sleeper chair & 1 day bed

Ask your Travel Professional about additional room types.

To learn more about popular room options, click on the videos below:

WALT DISNEY World.

Disney's Yacht Club Resort

King Room with Sleeper Sofa

WALT DISNEY World.

Disney's Yacht Club Resort

Two-Queen Room

WALT DISNEY World.

Disney's Yacht Club Resort

Two-Bedroom Suite (Club Level)

WALT DISNEY World.

Disney's Yacht Club Resort

King Room with Day Bed

CURRENT DINING OPTIONS



Table-Service dining

Yachtsman Steakhouse
Ale & Compass Restaurant



Quick-Service dining

The Market at Ale & Compass
Hurricane Hanna's Waterside Bar & Grill



Other dining options

Ale & Compass Lounge
Crew's Cup Lounge



RECREATION



Pools

Stormalong Bay Pool

3 Leisure Pools



More Resort Fun

Resort Campfire Activities

Movies Under the Stars

Poolside Cabana Rentals

Disney's Fantasia Gardens Miniature Golf Course

Motorized Boat Rentals

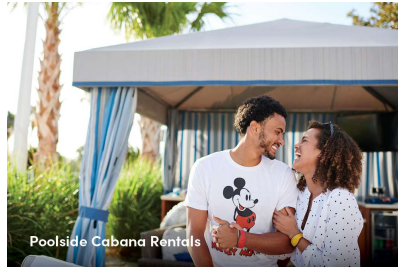
Fishing

Tennis

Volleyball

Running Trails

Lafferty Place Arcade



TRANSPORTATION



Disney Skyliner



Bus Service



Water Launch

DISNEY'S YACHT CLUB RESORT MAP

