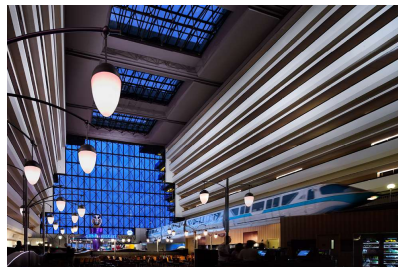
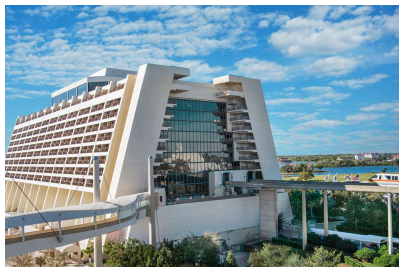




DISNEY'S CONTEMPORARY RESORT

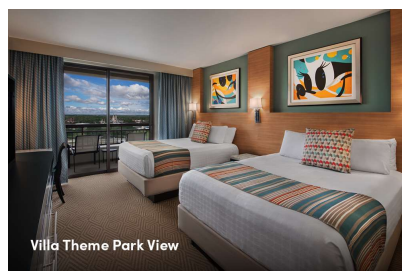


Retreat to this ultra-modern **Disney Resort** hotel and discover award-winning dining, spectacular views and dazzling pools. Whether you're staying in the iconic A-frame Contemporary tower or the nearby Garden Wing, you can walk to **Magic Kingdom®** Park main gate or catch the Monorail as it breezes through the tower. Inside, a 90-foot-tall mural by Disney Legend Mary Blair—responsible for the distinct look and feel of the **"it's a small world"®** attraction—celebrates the Grand Canyon on the American Southwest.

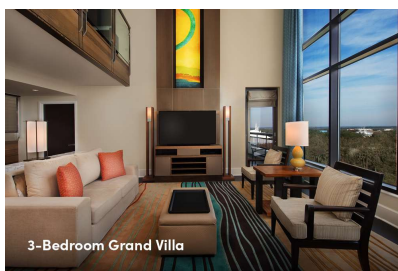
At **Bay Lake Tower at Disney's Contemporary Resort**, warm luxury meets modern elegance at this lakeside Resort hotel. Delight in studios and multi-bedroom villas, kitchens or kitchenettes and dramatic views that may include old-growth cypress trees, the shimmering Bay Lake, the lush courtyard, or

Cinderella Castle. Enjoy enchanting pools and award-winning dining—plus the extensive offerings of **Disney's Contemporary Resort**, connected by the convenient Sky Way Bridge.

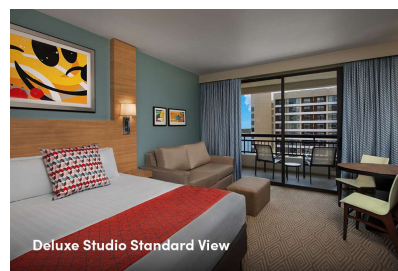
ROOMS & VILLAS



Villa Theme Park View



3-Bedroom Grand Villa



Deluxe Studio Standard View



Standard Rooms

Accommodate up to four Guests, plus one child under age 3 in a crib, 2 queen-size beds &

1 single day bed, or 1 king-size bed & 1 single day bed



Deluxe Studios

at Bay Lake Tower at Disney's Contemporary Resort

Accommodate up to four Guests, plus one child under age 3 in a crib, and have one queen-size bed, full-size sleeper sofa and private porch or balcony



One Bedroom Villas

at Bay Lake Tower at Disney's Contemporary Resort

Accommodate up to five Guests, plus one child under age 3 in a crib, and offer a fully equipped kitchen, king-size bed in master bedroom, queen-size sleeper sofa & twin sleeper chair in living room, washer and dryer, and private porch or balcony



Two Bedroom Villas

at Bay Lake Tower at Disney's Contemporary Resort

Accommodate up to nine Guests, plus one child under age 3 in a crib, and offer a fully equipped kitchen, king-size bed in master bedroom, 2 queen-size beds in second bedroom, queen-size sleeper sofa & twin sleeper chair in living room, washer and dryer, and private porch or balcony

...and many more!

Ask your Travel Professional about additional room types.

To learn more about popular room options, click on the videos below:



CURRENT DINING OPTIONS



Table-Service dining

California Grill

Steakhouse 71

Chef Mickey's



Quick-Service dining

Contempo Cafe



Other dining options

California Grill Lounge

Contemporary Grounds

Cove Bar

Outer Rim

Steakhouse 71 Lounge

The Sand Bar



RECREATION





Pools

Feature Pool
Bay Lake Pool



More Resort Fun

The Game Station
Basketball
Lakeside Yoga
Cabana Rentals
Fishing
Motorized Boat Rentals
Volleyball
Tennis
Running Trails
Contemporary Resort Campfire
Movies Under the Stars
Specialty Cruises



TRANSPORTATION



Bus Service



Monorail



Water Launch

DISNEY'S CONTEMPORARY RESORT MAP

